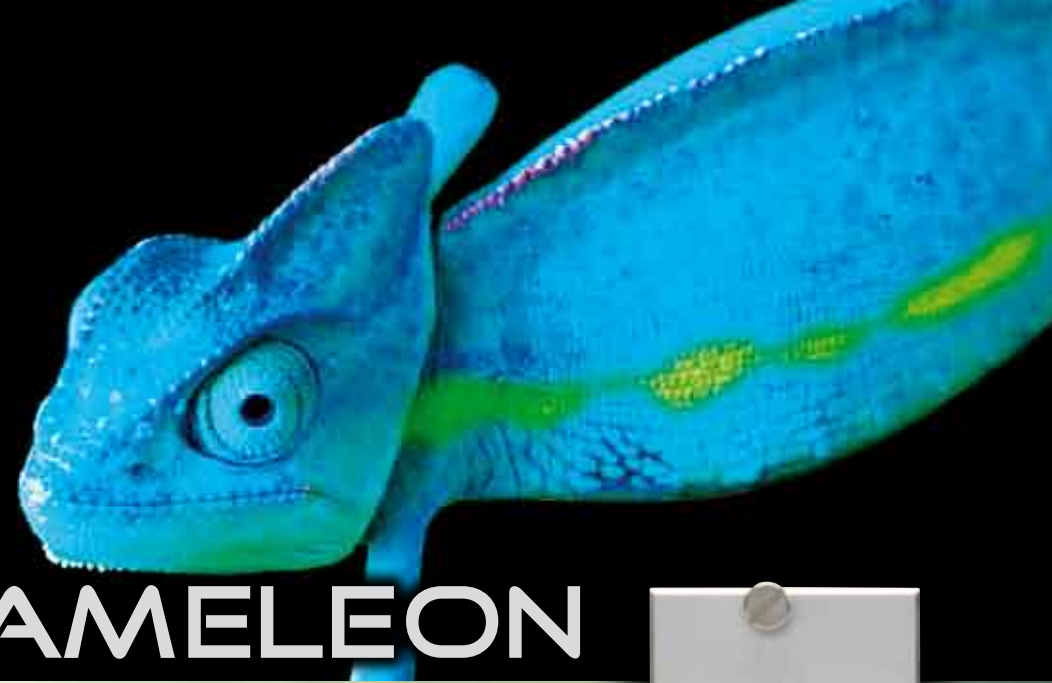


a2b
design for TV



CHAMELEON



CHAM



As important as it is to have a technically superior platform for your networks, as important is the commercial platform.

Technology changes and increasing quality requirements for operators has always been tied to large investments for hardware and infrastructure.

Imagine a product, where you could go from one distribution method to another, just by the click of your computer mouse - this is CHAMELEON, the transforming Head End.

The CHAMELEON will enhance the user experience for any Cable-TV or SMATV operator by its simplicity, flexibility and cost efficiency.

CHAMELEON-Applications

Applications needed for your network can be purchased at any time depending of your needs. You might want to start with digital reception and analogue distribution. Any time afterwards you may upgrade to digital distribution.

Create own program packages

Create your own program packages, decrypt and/or encrypt with your own selectable encryption system. If you prefer to distribute in IP-format through the embedded IPTV streamer its just a few mouse clicks away. Distribution in QAM, COFDM or analogue is as easy.

Managing your Head End

You manage your Head End through the Web interface and can easily manage, monitor and modify functionality anywhere where you have an IP connection, be it in your smart phone, PC or other devices connected to the Internet.

This way of updating existing hardware is cost effective, time saving, environmentally friendly and last but not least it gives you, your subscribers and installers a positive experience of distributed Cable-TV and SMATV.

Future of CHAMELEON

New functions and applications will be developed over time and software updates will be available to you with our support service that will be offered to our customers.

Proof of concept

To prove to you as a customer how versatile the product is we give all customers a 30 days trial of all released basic software applications for the CHAMELEON. Order the applications you want to keep from us and our distributors and the redundant applications will be shut off automatically after 30 days.

Eco touch

Low energy consumption

We design all products to generate as little heat as possible. This has positive effects on our environment as well as on the life time.

Ultra long life

Designing for long life cycle gives advantages for the environment through less scrap and repairing a product is worthwhile instead of scrapping if failures occur.

Future proof

One big reason for scrapping equipment is when technology requirements changes and the old equipment becomes obsolete. We have tried to avoid this through making the products open for software upgrades thus enhancing the products functionality over time.

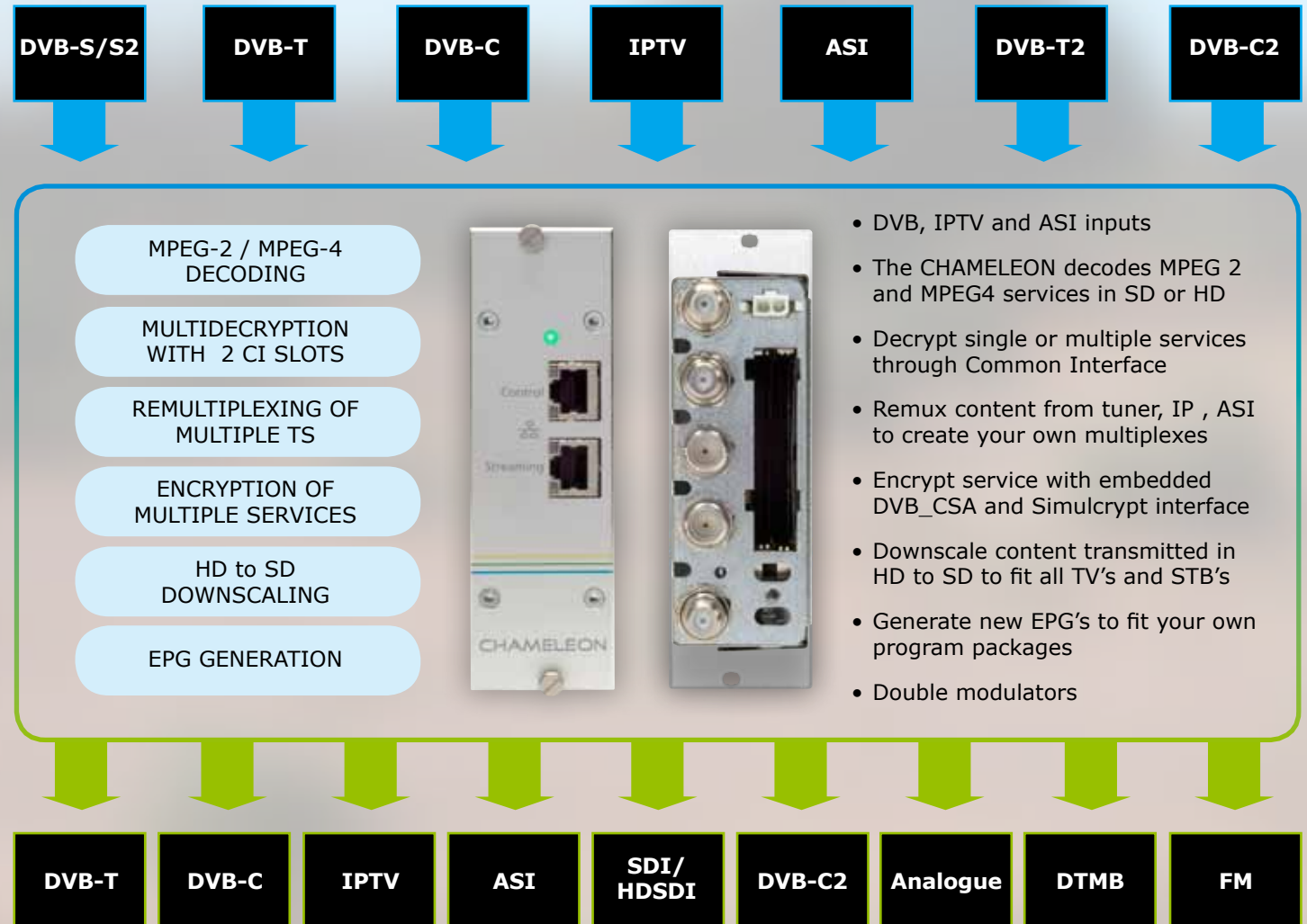
Contribution for each sold unit

Sometimes words are not enough, sometimes design efforts are not enough, sometimes we need to contribute to those who make a difference to our environment. A2B contributes to environmental projects with a fixed sum for every sold CHAMELEON to protect the worlds wildlife and environment.



CHAMELEON - Single hardware head end

The CHAMELEON product line is the first ever to cover almost every need for Cable-TV and SMATV distribution with only one hardware.



The different inputs and outputs are defined by software and hardware options and all software options can be updated at any time. The CHAMELEON includes receivers for DVB-S/S2 or DVB-T/C, furthermore it includes decoding of MPEG-2 and MPEG-4 video formats as well as it supports MPEG, AAC HE and AC-3 audio decoding. Remultiplexing is just a mouse click away.

CHAMELEON – the gifted HE

The CHAMELEON – adapting to the environment
Just as the chameleon adapts its colours to the changing environment, the CHAMELEON product line can be adapted to any forms of receiving, processing and transmitting TV content.

CHAMELEON – Single HW product line

The trend has finally reached the point where there is a single hardware device that gives you all the opportunities that you can imagine. And despite the versatility of the product you only have to pay for what you need.

CHAMELEON products are SW defined functionalities, all running on the same HW platform. All the software Functionality of CHAMELEON products can be modified and upgraded, at any time, without changing the installed hardware.

CHAMELEON – “all aboard”

The CHAMELEON product line covers the functionality needs for all types of installations, ranging from single unit stand-alone or SMATV applications to complex head-ends in large CATV networks. Installations can easily be extended, in size by adding more units, and in functionality by adding more SW options.

CHAMELEON - Adapting to your future

Our industry is undergoing an accelerating pace of change and development. To facilitate investment decisions we have developed a platform flexible enough to meet all imaginable requirements, and at the same time make it affordable.

With the CHAMELEON product line, you can adjust the product to your needs and we can adapt the products to new standards and technologies.

CHAMELEON – distributed processing

The CHAMELEON products are multi-functional products, where each unit is capable of all different kinds of processing. This distributed processing architecture will enable you to create any size of installation, and also to extend an installation incrementally.

Functional density

The Digital Smorgasbord

The selection of software configurations is extensive and you can pick what you need from our range of software options.

To simplify the choice we have defined products in the shape of functionality packages designed for the most common variants of network solutions.

To the right you can see some of these packages and features, but remember that there will continuously be new dishes on the CHAMELEON smorgasbord.

CHAMELEON products

Receiver DVB-S/S2, single/double

Receiver DVB-T/C, single/double

Receiver DVB-T2/C2

Transmodulator to DVB-T, single/double

Transmodulator to DVB-C, single/double

Analogue VSB RF-modulator, single/double

Edge QAM, single/double

Edge COFDM, single/double

MPEG2/MPEG4 SD decoder, single/double

MPEG4 HD decoder

CI decryption, single/double

Remultiplexer multiple TS

DVB_CSA Scrambler, single/double

IP streamer

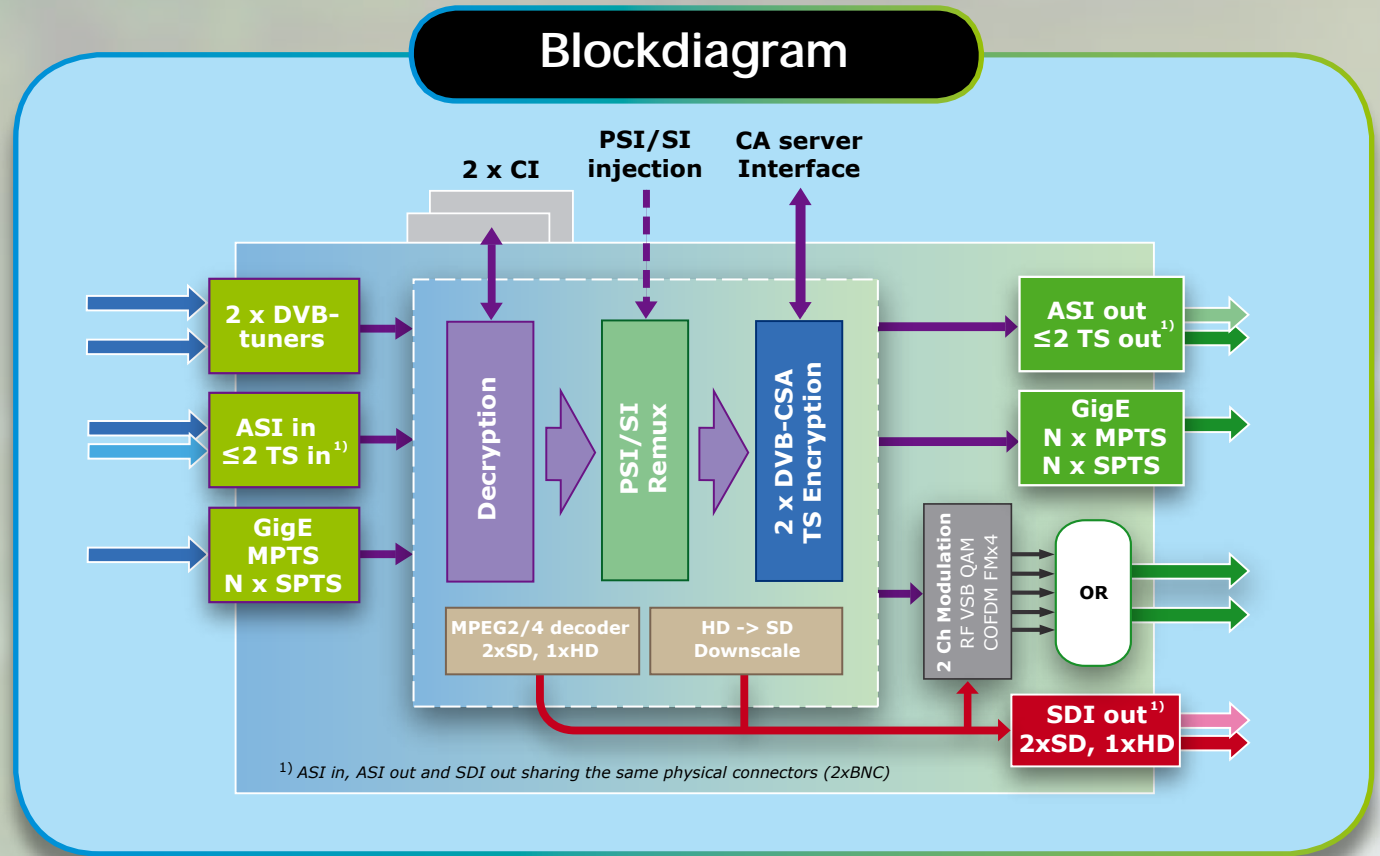
ASI streamer

SDI generator, 2 SD/1 HD



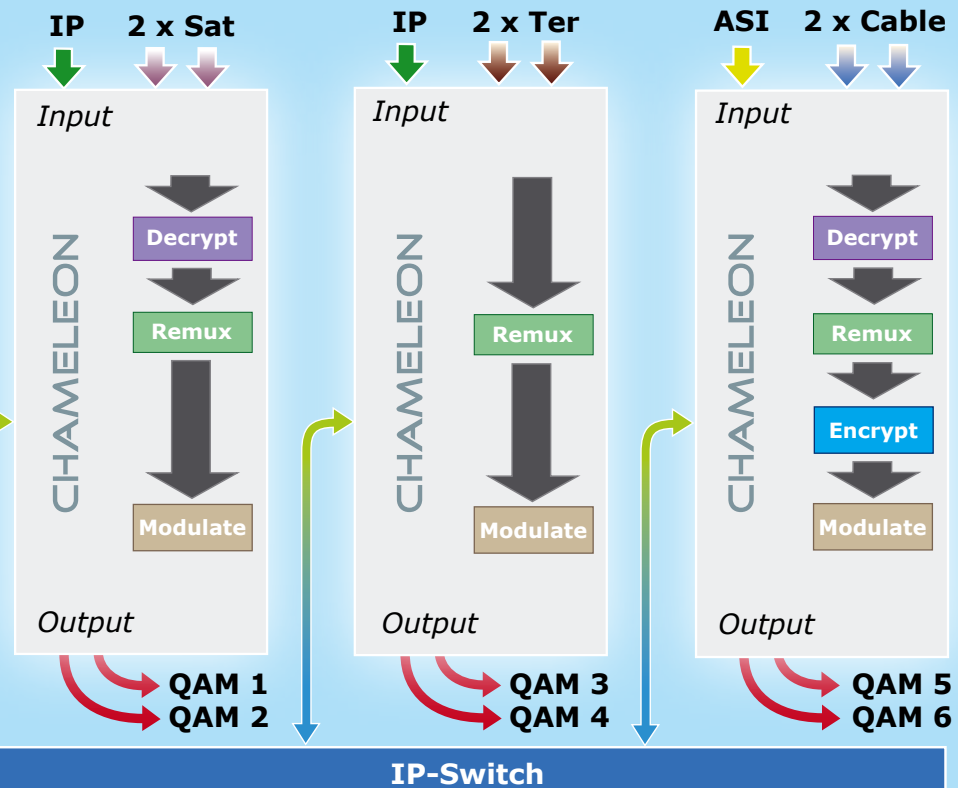
Density matters

Complete 200 programs Head end with reception, decoding, decryption and modulation of 20 multiplexes in 3 HU 19".



Enable transition to digital
from any format to any format
for any size of network anywhere!

Digital HE example



CHAMELEON

Technical specification

IPTV Input/Output

Input bit rate	< 800 Mbit/s
Output bit rate	< 800 Mbit/s
Connector	RJ45 / SGMII
Output protocol	UDP Multicast / Unicast, RTP
TS format	SPTS / MPTS
Time stamp & de-jitter	Yes

PSI/SI and remultiplexing

Remultiplexer with multiple inputs from tuners, IP and ASI. Multiple TS outputs to modulators, IP and ASI.

PSI/SI analysis and regeneration. PID dropping and PID remapping.

SDI / HD-SDI output

Connector	BNC
Compliance SDI-SD	SMPTE 259M, SMPTE 272M
Compliance SDI-HD	SMPTE 292M, SMPTE 299M

Connectors and Interfaces

IPTV In/Out connector	RJ45 and SGMII (GigE)
Control connector	RJ45 (10/100)
RF input connector	F female, 75 Ω
RF output connector	F female, 75 Ω
ASI input connector	BNC, 75 Ω
ASI output connector	BNC, 75 Ω
SDI/HD-SDI connector	BNC, 75 Ω , shared with ASI
CAM connectors	2 x PCMCIA (5 VDC)
LED Indicator lights	Power on (green) / Error (red)

Control and Management

Graphical User Interface for easy set up of complex systems. Simple handling of remultiplexing from any input.

Each Chameleon contains an embedded web server for management and control. Standard web browsers (Explorer, Mozilla etc.) are supported.

SNMP supporting all control and settings.

SNMP monitoring

Telnet CLI

ASI Input / Output

ASI bit rate	Max 270 Mbit/s
Max payload bit rates:	
Input	< 90 Mbit/s
Output	< 90 Mbit/s
PCR restamping	Yes

DVB_SCA scrambler / Simulcrypt interface

Interface	IP
DVB compliance	DVB-SimulCrypt (ETSI TS 101 197)

Miscellaneous

Power supply	12 VDC nom. (9-14 VDC)
Power consumption	Typ. 16 W (excl. LNB, CAM load)
Dimensions	230x105x40 mm (excl. connectors)
Weight	Approx. 600 g
Controller	Embedded web server, SNMP
Operating temperature	-20 to +50°C, non-condensing
Product grading	IEC60728-5, grade 1

QPSK/8PSK Satellite Receivers

Input frequency	950 – 2150 MHz
Input level	-65 to -25 dBm , 49 to 84 dBμV
Spectral inversion	Yes, selectable
LNB voltage	Auto, Off or 13/18V, programmable
22kHz to LNB	Auto, On or Off, programmable
DVB compliance	DVB-S (EN 300 421) DVB-S2 (EN 302 307)

MPEG Decoder –Audio / Video

Supported formats	MPEG2 MP@ML, MPEG2 MP@HL, up to MPEG4 H.264 AVC, HiP, level 4 MPEG 1 layer II, AAC HE (Audio)
Output video	SDI, HD-SDI, audio embedded
Output audio	Stereo, Mono or Dual Sound
Aspect Ratio	Letterbox, Pan/Scan, or conversion combined (14:9) programmable, WSS
Teletext	Subtitling Teletext or DVB subtitling

VSF – AM Modulation

Standards	PAL B/G, D/K, I, SECAM D/K, B/G, L
Sound	Mono, NICAM stereo, A2 or A2* stereo
Modulation video	VSF AM, neg. or pos.
Modulation mono	Audio FM or AM
Output frequency	47 – 862 MHz
Output level	≥ 110 dBuV (1 channel)
Video S/N (weighted)	≥ 60 dB
C/N, broadband	≥ 70 dB (65 dB typical at adjacent channel)
NICAM standards	NICAM 728 (EN 300 163)
Spur. suppression	≥ - 60 dBc

QAM cable receiver / COFDM Terrestrial receiver

Input frequency	51-1006 MHz
Input level (DVB-T)	39 to 79 dBμV ¹⁾
Input level (DVB-C)	49 to 79 dBμV ²⁾
Bandwidth (DVB-T)	6/7/8 MHz
Bandwidth (DVB-C)	6/7/8 MHz
DVB compliance	DVB-T (EN 300 744) DVB-C (EN 300 429)

¹⁾ QEF reception with test signal :8K, 64 QAM,
¼ guard interval, 2/3 FEC

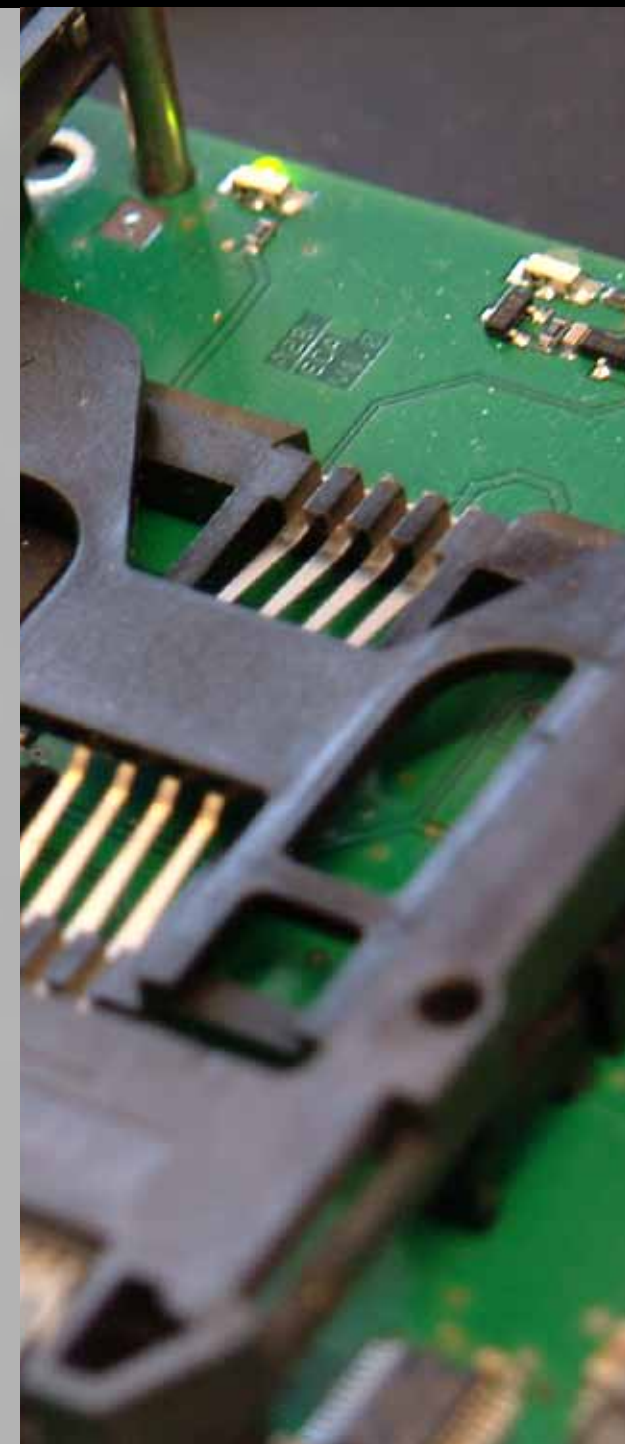
²⁾ QEF reception with test signal :64 QAM, C/N 26dB

COFDM Modulation

COFDM mode	2k, 8k
Guard interval	1/4, 1/8, 1/16, 1/32
FEC	1/2, 2/3, 3/4, 5/6, 7/8
MER	≥ 44 dB
DVB compliance	DVB-T (EN 300 744)
Max output bit rate	32 Mbit/s
Output frequency	51 – 1006 MHz (centre frequency)
Output level	≥ 102 dBuV (51-858 MHz)
Spur. suppression	≥ - 60 dBc

QAM Modulation

QAM modes	16, 32, 64, 128 and 256 QAM
Symbol rate	4 – 7.2 Mbaud/s
MER (at RF out)	≥ 43 dB for 256-QAM
DVB compliance	DVB-C (EN 300 429)
Output frequency	51 - 1006 MHz (centre frequency)
Output level	≥ 105 dBuV (51-858 MHz)
Spur. suppression	≥ - 60 dBc



CHAMELEON

How to buy

Chameleon



GN 50



Wallmount Kit



Power Supply



Chameleon rack complete



Cool Power

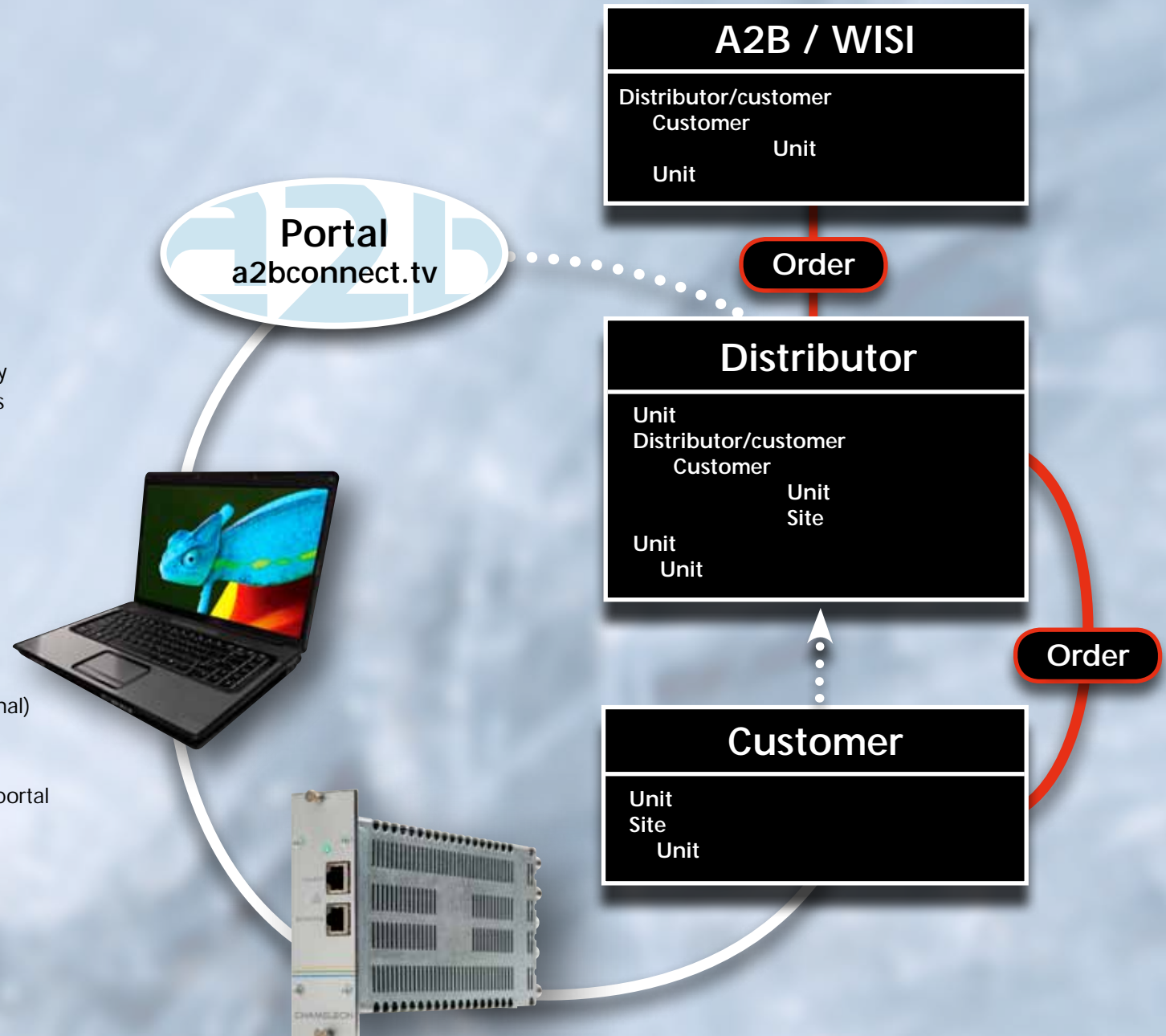
Chameleon portal "a2bconnect.tv"

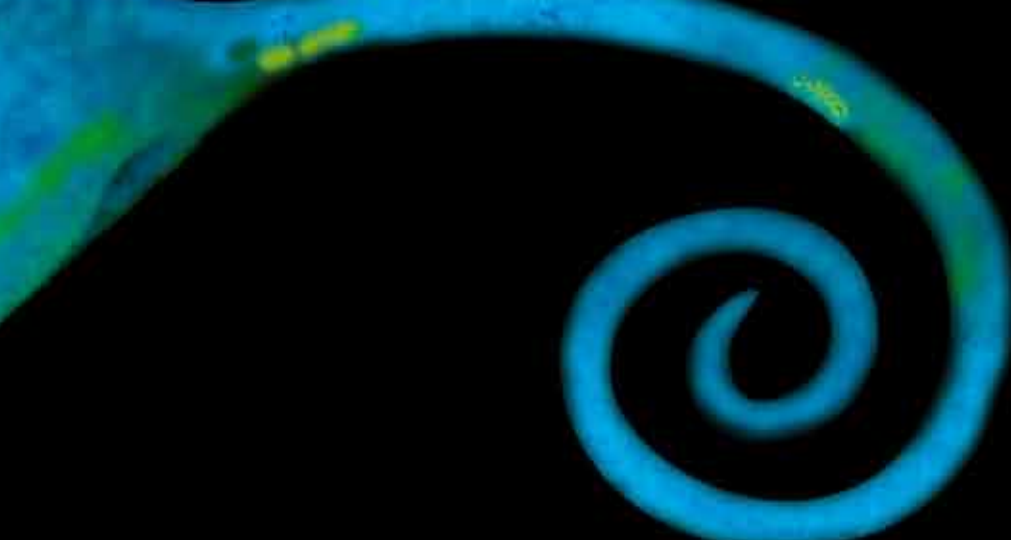
Single HW product line
Functionalities enabled with SW options

- SW options to enable functional blocks
- Customer orders Chameleon and SW functionality
- Chameleons delivered as HW without SW options
- Registration and SW options download
- License agreement mandatory for FW upgrades
- Registration on-line or off-line
- Additional SW options download via the portal
- The license agreement registered at first connection to a2bconnect.tv

Support agreement gives:

- installed base logging, unit status and site (optional)
- access to portal and FW upgrades for 12 months
- access to A2B/WISI support
- access to FAQ and additional information at the portal





ELECON



A2B Electronics AB

Phone: +46 141 22 91 00
E-Mail: market@a2b.se
Internet: www.a2b.se



WISI Communications

Inland: Phone +49 7233-66-0
Export: Phone +49 7233-66-280
E-Mail: info@wisi.de
Internet: www.wisi.de